



# Coopersale Hall School

An Exceptional Independent School in Epping  
Introducing Seniors from September 2023

03

Introducing Seniors

05

Curriculum and Academic  
Success

07

6th Form and Life Beyond  
School

09

Teaching

11

Facilities

13

Wider Curriculum

15

Pastoral Support and  
Wellbeing

17

Personal Development

18

Managing Change

19

Seniors FAQ







# Introducing Seniors

This is an exciting time in Coopersale Hall School's history, as we begin the process of extending our provision to senior pupils. We are very proud of our origins as a prep school that is now growing upwards. Our new senior developments are designed to preserve the supportive, family atmosphere of our already successful junior department.

Year groups will remain small enough for pupils to be given a personalised education, but large enough that pupils will be challenged, and new friendships can be made. Familiarity and recognition from teachers who already know many of the children will be just a few of the positive aspects of an all-through school.

The first few years of any senior school are an exciting time, and we aim to provide our pupils with as many opportunities as possible to grow and develop into well-rounded young adults.

# Entry

Students from Coopersale Hall moving into the Seniors will be given automatic entry into Year 7 and beyond.

Prospective students looking to join our Seniors from outside will go through an academic selection process with the same entrance exams and interviews as we have in place at our other all-through schools to ensure that we maintain a high academic standard.

## Year groups will be introduced as follows:

- |                      |  |
|----------------------|--|
| From September 2023: | Internal and external students move into Year 7.   |
| From September 2024: | Year 7 students move to Year 8. Internal and external Year 6 students move to Year 7.  |
| From September 2025: | Year 8 students move to Year 9. Year 7 students move to Year 8. Internal and external Year 6 students move to Year 7, and so on. |

There is clear demand for a senior department at Coopersale Hall, and we have been registering much interest since the announcement was made in March from current families and from the wider community.

Both Normanhurst and Braeside are heavily over-subscribed from Year 7 upwards and operate waiting lists for entry.



# Curriculum and Academic Success

The senior curriculum will be as broad and enriched as we have been developing in the other senior departments within the Group.

We expect our students to be proud of their achievements and to celebrate their academic successes.

We embrace diversity and acknowledge that academic achievement for one child may look different to another.

All students will aim to achieve 9 GCSEs.

## 6 Core Subjects

- English Language
- English Literature
- Maths
- Physics
- Chemistry
- Biology

## 3 Option Subjects

- French
- Spanish
- History
- Geography
- Business Studies
- Computer Science
- Art
- DT
- PE
- Music
- RS

In addition there will be weekly PSHE lessons with a scheme of work that includes topics such as health, relationships, equality, changes through puberty and careers education, all designed to help prepare students for the future.



Recommended for you

- ADVENTURE MYSTERY
- FANTASY
- SCIENCE-FICTION
- SPORTS FICTION
- MUSIC - POP
- MUSIC - JAZZ
- CLASSICS
- MODERN FICTION





# 6th Form and Life Beyond School

Within the Group there is an excellent track record at the other senior departments of students successfully gaining sixth form places in their first choice schools and colleges - many with scholarships.

There is a known wider choice of good state schools available at sixth form, without the limiting entry criteria in place for admissions into Year 7, for example Trinity, Davenant and Anglo European.

Even the largest state schools run smaller A Level teaching groups for more focussed attention.



In Years 10 and 11, pupils will be prepared for life beyond Coopersale Hall in a number of ways.

Mock A Level interviews with the Head and senior team.

Careers guidance, discussions and practice interviews with industry leaders built into the curriculum in Years 10 and 11.

A week's work experience in the summer term of Year 10 to give students a flavour of working in a real setting.

Aptitude tests in Year 10 that help shape future academic and career choices.



# Teaching

Our senior model will see one class of around 20-22 students, with the capacity for sets and smaller groups in many areas.

Most senior lessons are taught by subject specialists according to set curricula and using assessments that mirror those in place for GCSEs. Many specialists are able to offer two or even three subjects.

Our senior teaching focuses on knowledge, skills, and understanding, with opportunities to develop critical thinking and problem solving skills.

We will be recruiting a Head of Seniors in advance of the first cohort joining in September 2023 to help structure the curricula, develop schemes of work and prepare the rooms after the building project is finished.

Some existing staff will be able to teach in the Seniors to provide continuity for students. These would include subjects such as French, Spanish, PE/Games and Music.

The school's established SEND department will be enhanced to help those students who might require additional individual or group support.



## Teachers in the Oak-Tree Group:

- Go beyond the prescribed curriculum to develop a passion for their subjects.
- Develop a love of learning in each individual student.
- Use a variety of resources and facilities to enable creative and active learning.
- Enable students to develop at their own pace with sufficient opportunities for stretch and challenge.
- Provide opportunities for innovation, creativity and risk-taking.
- Encourage research-based learning to develop independent thinking skills and presentations to improve oral skills and general confidence.
- Provide additional booster sessions for GCSE students at break times and after school.



# Facilities

The new senior building will provide a number of additional facilities as part of a phased plan as year groups are introduced into the school, including:

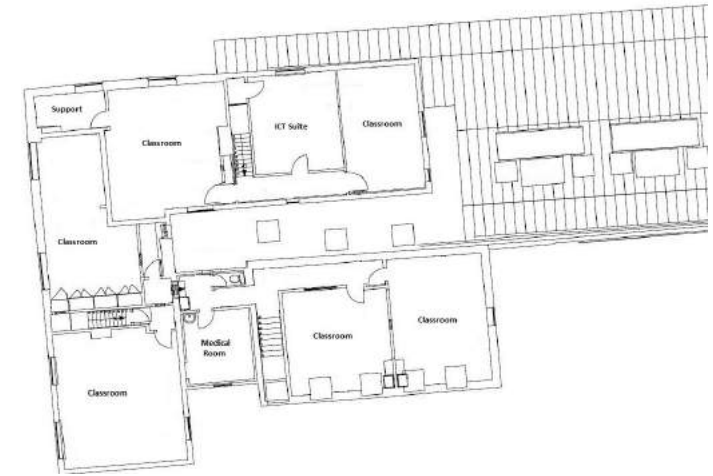
- A new GCSE-appropriate Science Lab (Phase 1 by 2023)
- A new Art/DT Studio with resources room (Phase 1 by 2023)
- A new GCSE-appropriate ICT Suite (Phase 1 by 2023)
- A senior library (Phase 1 by 2023)
- 6 additional new classrooms (2 in Phase 1 by 2023, 4 in Phase 2 by 2024)
- Changing rooms and toilets appropriate for seniors (Phases 1 and 2)
- Offices and support rooms (Phases 1 and 2)

Looking at the proposed 'Senior Buildings' from the Bakers Cottage front gate – new development shaded on the left.

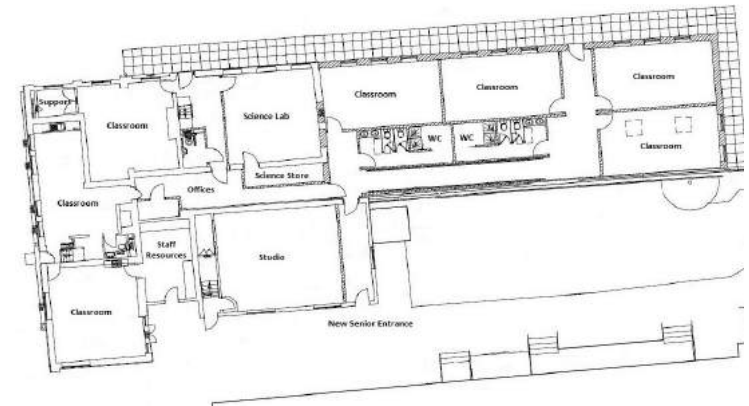
NEW BUILDING  
NORTH ELEVATION



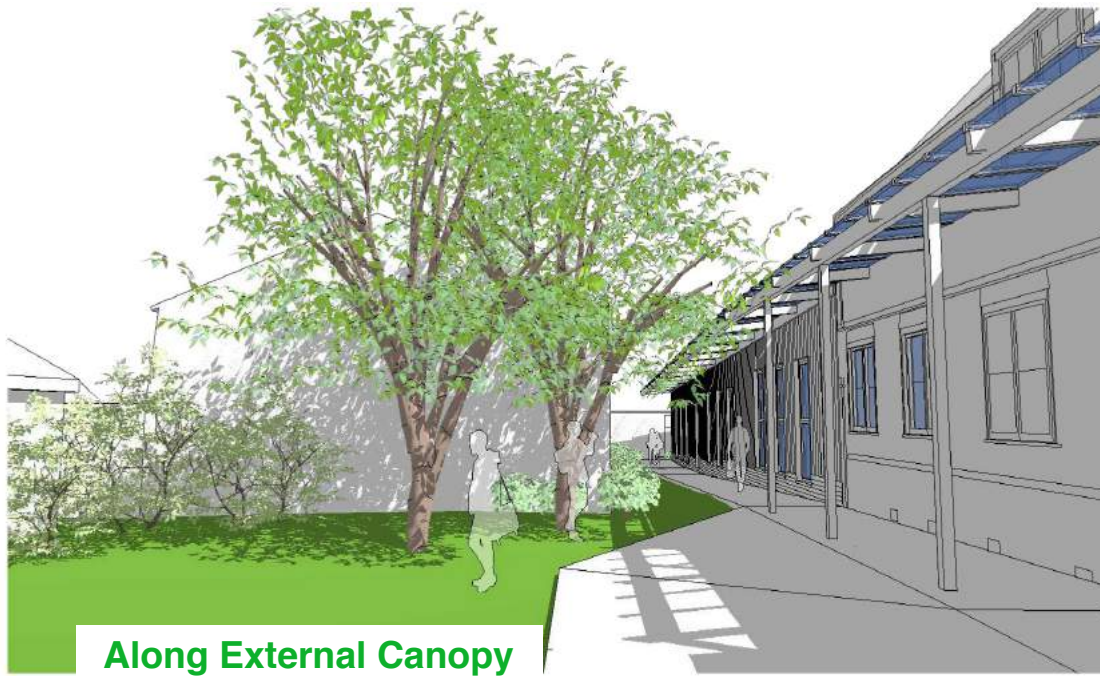
COTTAGE  
NORTH ELEVATION



Ground floor plans of whole building (new and some existing)



Ground floor plans of whole building (new and some existing)



We are used to timetabling two other schools so that seniors and juniors can co-exist harmoniously while using some of the same facilities. This will see our seniors using facilities such as the astroturf, studio and main hall/dining room in addition to the new areas being developed.

Seniors tend to run to a different timetable, so are in lessons while juniors are at break and then have breaks/lunches when juniors are in lessons. We will use the same timetable slots as are in place at the other two senior departments within the Group.

We will use other local sports facilities with internal provision to supplement our own. These will include Epping Sports Centre for cardiovascular lessons in the gym and general sports in the large sports hall. Travel time will be built into the timetable.

We will be developing the large area adjacent to the astroturf pitches into a senior recreation/sports area.



Entrance Area

# Wider Curriculum

Coopersale Hall students already have a huge number of sporting, academic and creative extra-curricular clubs and activities from which to choose, and these will be extended for senior students with additional specialists introduced.

Plays and musical performances form an important part of life for our senior students, and our new Head of Music joins us from Normanhurst where she has developed ensembles, bands and orchestras.

The other senior departments within the Group provide numerous educational trips and visits to local or London-based centres in order to extend students' learning.

We already run a number of residential visits both in the UK or abroad for senior students, which will be introduced into Coopersale Hall. These have included:

- Sports trip to Spain to train with the Real Madrid coaching staff at their training ground
- Languages trips to France or Spain
- Ski Trips to Italy or Austria
- History trips to the First World War Battlefields

Senior students participate in a range of sporting, academic and creative competitions within the local area, locally or nationally with other ISA Schools and with other seniors within the Group.

Senior students are already used to collaborating with others from within the Group on trips, for sporting activities and in competitions.





# Pastoral Support and Wellbeing

At Coopersale Hall School, we are committed to supporting the emotional health and wellbeing for our whole school community. We recognise that everyone experiences life challenges that can make us vulnerable at times, and may need additional emotional support. Our aim as a school is to ensure that our pupils are very well supported, and are able to access help when they need it.

The senior department will have the same aims, ethos and values as are already embedded at the school. We support children to become relaxed, confident, tolerant and articulate young people who are able to take responsibility for themselves. We give our students the tools to build their self-esteem, with many opportunities to improve their confidence within our smaller setting.





Our students have extensive pastoral support to help manage the pressures of senior education, GCSEs, growing up and life beyond school, including:

- Enhanced House system with staff assigned as Heads of House and a range of House activities, competitions and assemblies.
- Tutors for each year group trained to support students' welfare.
- Mental Health and Wellbeing lead, with a wellbeing 'hub' assigned for drop-ins and booked 1:1 sessions/discussions.
- Mentoring sessions with key staff to discuss academic and pastoral wellbeing.
- Staff who provide a supportive and compassionate environment and develop strong relationships based on mutual respect and trust.



# Personal Development

Senior students contribute to the life of the school in many ways:

- Acting as House Captains or school prefects
- Taking assemblies and giving presentations to wider audiences
- Representing others through participation in the various school councils
- Overseeing charitable activities and encouraging others to participate
- Being reading buddies or mentors to younger pupils

We develop our senior students' leadership skills and provide opportunities to communicate with wider audiences. We try to empower our seniors to make a difference in the world, inspiring them to go into their communities and address environmental, social and political challenges. We support our students from an early age to articulate their views and learn how to have an impact, whether individually, in a class or as part of the school as a whole.





# Managing Change

The Group Managing Principal, Matthew Hagger, has been involved with the development of the schools in the Group for the last 21 years and has overseen the compliance, recruitment, financial/business matters and educational development of the schools through the various teams that he has put together over the years.



The Group Education Principal, Claire Osborn, joined the Group in 2003 and spent 10 years as Headmistress of Normanhurst and 3 years as Headmistress of Braeside. She has been Group Education Principal for the last 2 years and oversees the education in the four schools. She is also a Vice-President of the Independent Schools Association and a qualified lead inspector for the ISI, undertaking several inspections each year.

The two existing all-through schools in the Group are well-established and have gone through much change to become the schools they are now with track records for academic success. Normanhurst became part of the Group in 1996 and Braeside in 2015.

Matthew Hagger and Claire Osborn have worked together for many years to develop the senior curricula at Normanhurst and Braeside, provide high levels of resourcing appropriate to each subject, liaise with the various exam boards, monitor the progression of the students against a range of assessments and appoint an excellent body of staff responsible for the day-to-day teaching.

Coopersale Hall's Headmistress, Moreen Barnard, was Head of School (both Juniors and Seniors) at Normanhurst before taking up her current role in 2020. She acted as a mentor to senior students and helped track progression to enable them to achieve their full potential in their GCSEs.

The three key people behind the development of the senior department at Coopersale Hall have a wealth of senior experience on which to draw, with already established systems, procedures, policies and curricula that will be invaluable over the coming months.



# Senior FAQs

## **When will Coopersale Hall have a full senior department?**

There will be a phased introduction of senior pupils from September 2023, with the hope of having a full seniors, up to Year 11, by 2027. In 2024, Year 7 pupils will move to Year 8 and a new group of Year 7 pupils will join and so on.

## **Will you still prepare pupils for 11+ exams?**

We will continue to prepare children for 11+ entry for several years in order to provide more choice to our families. Pupils will be prepared as thoroughly as they always have been for the next phase of their education beyond our Year 6. This will either be for parents' original choices of external senior schools, with whom we maintain excellent relationships, or for the new option of our own senior department.

## **How what will the entry procedures for external pupils look like?**

There will be external exams for students looking to join us into the seniors from other local schools. Pupils will go through an academic selection process with the same entrance exams and interviews as we have in place at our other all-through schools to ensure that we maintain a high academic standard.



### **What new facilities will be developed for the seniors?**

We have planning consent to refurbish the inside of Bakers Cottage to form a new senior building, with classrooms, toilets, Science Lab/store, offices, support rooms and an ICT Suite. The large conservatory at the rear of the cottage will be demolished and a new senior block built, with classrooms and toilets/changing rooms/showers. We will also re-landscape an area to the rear of the site to create a senior recreation/seating area.

### **How will pupils be prepared for when they leave school at Year 11?**

Pupils will be prepared in a number of ways, including taking part in mock A Level interviews with the Head and senior team, have careers guidance and discussions with industry leaders, have the opportunity to take a week long work experience placement and aptitude tests in Year 10.



### **What experience does the group have with working with senior pupils?**

The Oak-Tree Group has extensive experience working with seniors, with two all-through schools already in the group. Matthew Hagger, Claire Osborn and Moreen Barnard, the three key people behind the development of the senior department, have a wealth of senior experience on which to draw.

### **How big will classes be in the senior department?**

Our senior model will see one class of around 20-22 students, with the capacity for sets and smaller groups in many areas. As pupils move through the school to GCSE lessons, Option subject classes will be smaller.

## CONTACT US

**TELEPHONE:** 01992 577133

**EMAIL:** [info@coopersalehallschool.co.uk](mailto:info@coopersalehallschool.co.uk)

**ADDRESS:** Flux's Lane, Epping, Essex, CM16 7PE

## Follow us on Social Media



Coopersale Hall School



coopersalehschool



CoopersaleHSch



[www.coopersalehallschool.co.uk](http://www.coopersalehallschool.co.uk)



SUPERANS CONANDO